

SÓLAS

CONTEMPORARY FIRE

**TWENTY6 FI
DIRECT VENT LOG SET KIT
PART #: LGS-26FI**

INSTALLATION MANUAL

ONLY FOR USE ON SÓLAS MODELS: FIN-36N, FIN-36P



WARNING

This log set kit shall be installed by a qualified service agency in accordance with the manufacturer's instructions and all applicable codes and requirements of the Authority Having Jurisdiction. If the information in these instructions is not followed exactly, a fire, explosion or production of carbon monoxide may result causing property damage, personal injury or loss of life. The qualified service agency is responsible for the proper installation of this kit. The installation is not proper and complete until the operation of the converted appliance is checked as specified in the manufacturer's instructions supplied with the kit.

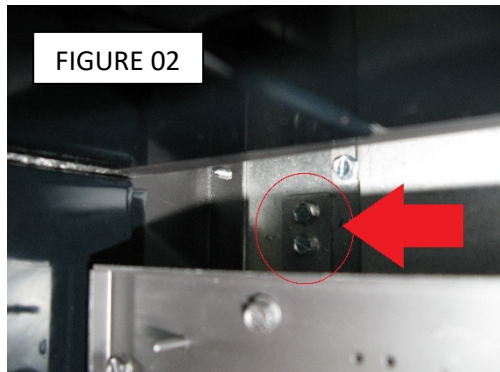
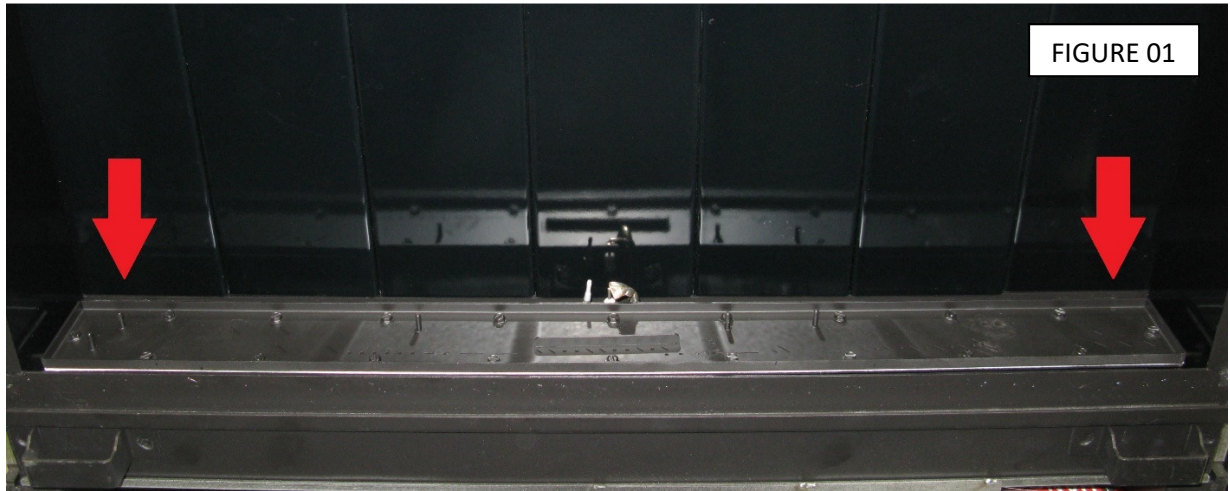
NOT FOR USE WITH VENT FREE OR OUTDOOR FIREPLACES

INSTALLER: Leave this manual with the appliance | **CONSUMER:** Retain this manual for future reference

LOG SET INSTALLATION

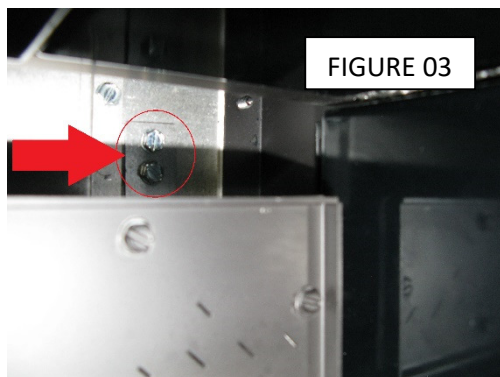
Kit Contents:

- (3) Ceramic Logs
- (2) Ceramic Rocks
- 13oz Lava Rock
- Metal Logset burner



Step #1

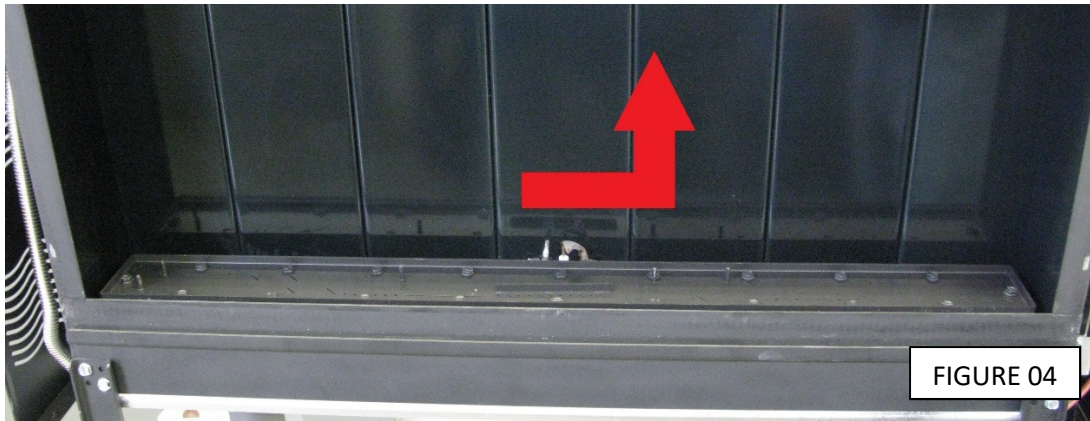
Your fireplace will have shipped from the factory with the Glass Media burner in place, before installing the logset burner, we need to remove the glass burner. The burner is held in place by 4 sheet metal screws behind the burner, 2 on the left and 2 on the right as shown in figure 01. Figure 02 shows 2 screws on the left behind the burner, remove these screws. Keep these screws in a safe place as they will be needed to install the Logset burner.



Step #2

Figure 03 shows the 2 screws on the right behind the burner, remove these screws. Keep these screws in a safe place as they will be needed to install the Logset burner.

LOG SET INSTALLATION

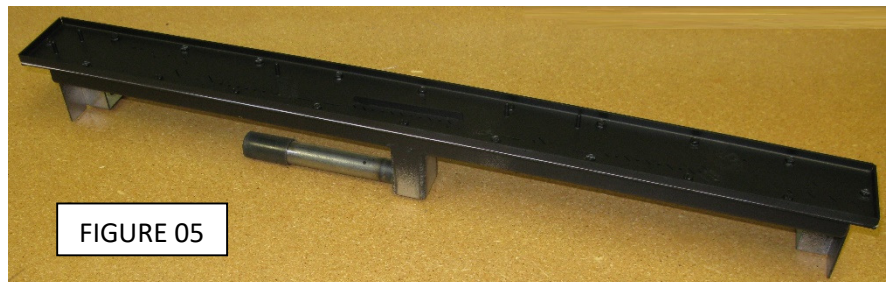


Step #3

To remove the burner from the fireplace, slide the entire assembly to the right before lifting up to remove as shown in figure 04.

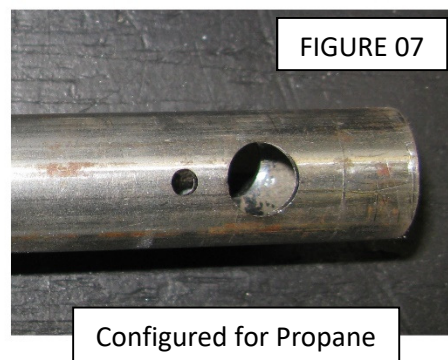
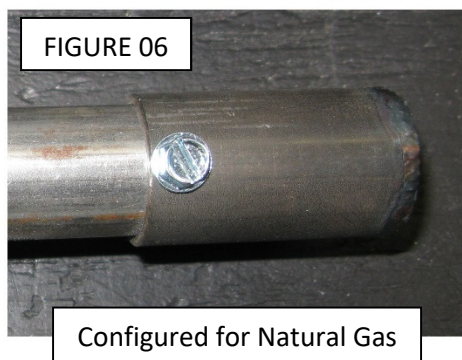
Step #4

Once the glass media burner has been removed, locate the Logset burner included in the kit LGS-26FI as shown in figure 05.



NOTE:

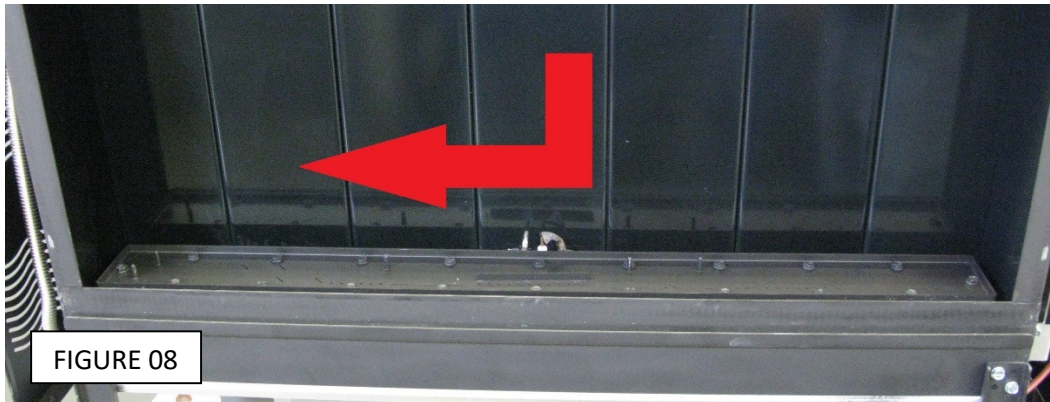
The logset burner can be configured for either Natural Gas or Propane by installing or removing a collar on the burner venturi. Figure 06 shows the venturi inlet with the collar installed on a burner configured for Natural Gas. Figure 07 shows the venturi inlet with the collar removed from a burner configured for Propane. **THIS VENTURI IS NOT ADJUSTABLE.** If you need to convert your burner from Propane to Natural Gas or vice-versa, please order the appropriate conversion kit for your appliance.



LOG SET INSTALLATION

Step #5

Install the logset burner within the firebox by lowering the burner into the firebox (while keeping the burner pressed toward the right side of the firebox) then sliding the burner left towards the center of the firebox to engage the burner orifice as shown in figure 08. Confirm that the burner inlet tube has engaged the burner orifice.



Step #6

Secure the burner using the (4) #10 sheet metal screws set aside from steps 1 & 2.

Step #7

Install the 3-rock cluster on the 2 pins located just right of the pilot. (Figure 09)



LOG SET INSTALLATION

Step #8

Install the single rock on the 2 pins located on the far left of the burner top. The log-locating tab on top of the rock should be toward the back of the burner. (Figure 10)



Step #9

Install the center birch log by placing the left side of the log on the locating pin left of the pilot. The right side of the log will rest on top of the 3-rock cluster, rotate the log so it gently touches the rear enamel panel of the firebox. (Figure 11)



Step #10

Evenly distribute the included 13oz of lava rock on the exposed burner top. Cover the burner top completely but do not compress or “pack” the lava rock tightly. Pay special attention to tight and hard to reach areas when placing the media on the burner. It is ok if small amounts of lava rock are lost over the edge of the burner. (Figure 12)



LOG SET INSTALLATION

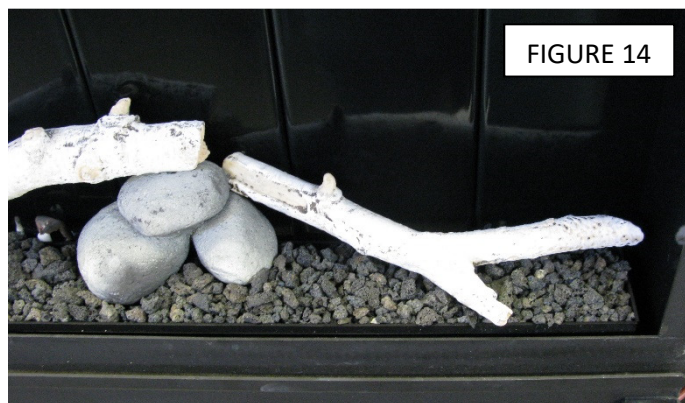
Step #11

Using the log-locating tab on the single rock on the left side of the burner, rest the small birch log on the rock and align with the leading edge of the burner as shown in figure 13.



Step #12

The Y-log should be located as shown, begin by referencing the left side of the log between the 3-rock cluster and the rear enamel panels as shown. The smallest branch of the "Y" log should align with the leading edge of the burner resting gently on top of the lava rock. (Figure 14)



Installation is now complete, refer to the TWENTY6 owner's manual for instructions on final assembly and lighting of the appliance.

