

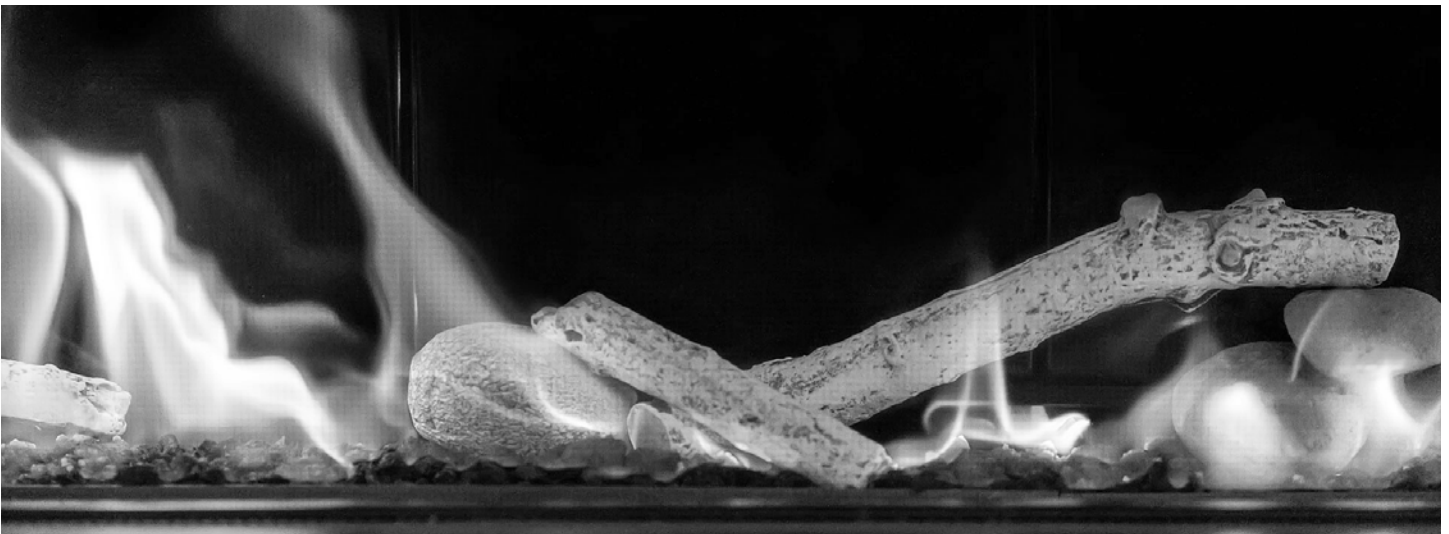
SÓLAS

FORTY8
DIRECT-VENT LOG SET KIT
PART: LGS-48

INSTALLATION MANUAL

ONLY FOR USE ON SÓLAS MODELS: 48N-SSL, 48P-SSR, 48N-ST, 48P-SSL, 48P-SSR, 48P-ST

SÓLAS BIRCH LOG SET KIT



WARNING

This log set kit shall be installed by a qualified service agency in accordance with the manufacturer's instructions and all applicable codes and requirements of the Authority Having Jurisdiction. If the information in these instructions is not followed exactly, a fire, explosion or production of carbon monoxide may result causing property damage, personal injury or loss of life. The qualified service agency is responsible for the proper installation of this kit. The installation is not proper and complete until the operation of the converted appliance is checked as specified in the manufacturer's instructions supplied with the kit.

NOT FOR USE WITH VENT-FREE OR OUTDOOR FIREPLACES

SÓLAS BIRCH LOG SET

KIT CONTENTS:

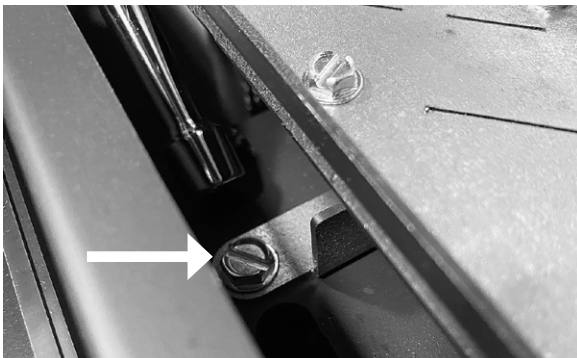
- (4) CERAMIC LOGS
- (5) CERAMIC ROCKS
- 1lb. 3oz. LAVA ROCK
- METAL LOG SET BURNER



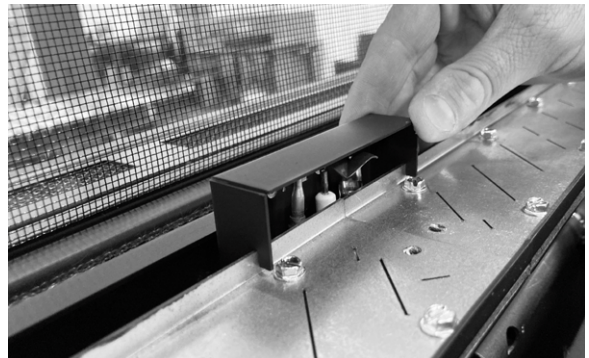
Unless the FORTY8 Slim-Line Built-In Gas Fireplace was originally ordered with the Birch Log Set, your fireplace will have shipped from the factory with a Glass Media burner in place. Before installing the log set burner, you will need to remove the glass burner. See following steps 1-4 to remove the Glass Media burner. If the fireplace has been ordered with the Log Set Burner, you can skip to **Step 10 (Page 4 of this manual)**.

REMOVAL OF GLASS MEDIA BURNER

1. The burner is retained by [8] #10 sheet metal screws. Using a $\frac{5}{16}$ " nut driver, remove screws located below the burner (in front of and behind burner).



2. Remove pilot hood.

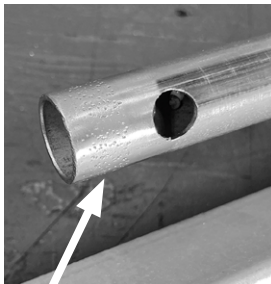


LOG SET INSTALLATION

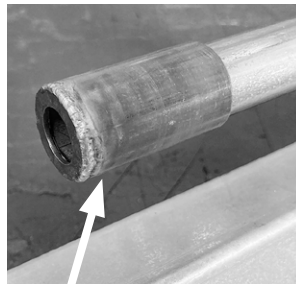
3. The FORTY8 model fireplace has one burner which is removed by lifting the burner to the right. Lift the end of the burner up and move towards the end of the firebox until the burner inlet tube is off of the burner orifice. Lift the burner out of the fireplace.



4. Once the glass media burner has been removed, locate the Log Set Burner included in the kit **LGS-48** and install in the fireplace reusing the hardware removed during disassembly.
5. When converting to propane, remove collar on burner inlet tube. When converting to natural gas install collar over burner inlet tube and secure with #8 sheet metal screw provided using a 1/4" nut driver.



Collar OFF for LP



Collar ON for NG

INSTALLATION OF BIRCH LOG SET

> **Start *HERE* if the *FORTY8 Slim-Line Built-In* was originally ordered with a Log Set Burner**

1. Install the 3-rock cluster on the 2 pins located just right of the pilot. **(Figure 1)**



Figure 1

2. Install the center birch log by placing the left side of the log on the locating pin left of the pilot. The right side of the log will rest on top of the 3-rock cluster, rotate the log so it gently touches the rear enamel panel of the firebox. **(Figure 2)**



Figure 2

3. Install the second, smaller, 3-rock cluster on the pin located right of 3-rock cluster installed during step #1. Once the 3-rock cluster is sitting on the pin, rotate clockwise until the lower left rock touches the rear edge of the burner. **(Figure 3)**

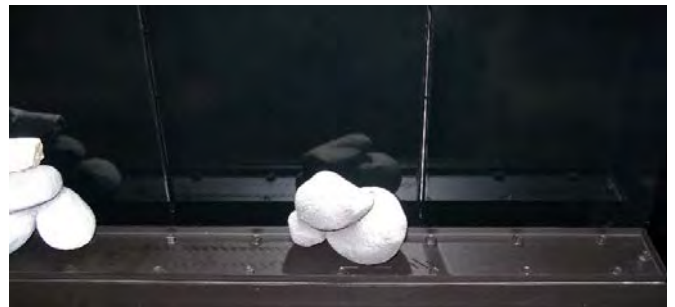


Figure 3

LOG SET INSTALLATION

4. Install the right-hand birch log by placing the left side of the log on the 3-rock cluster installed in step #3. A groove on the underside of the log which engages with the leading edge of the burner. The right side of the log will rest against the right enamel panel within the firebox. **(Figure 4)**



Figure 4

5. Install the single rock on the 2 pins located on the far left of the burner top. The log-locating tab on top of the rock should be toward the back of the burner. **(Figure 5)**

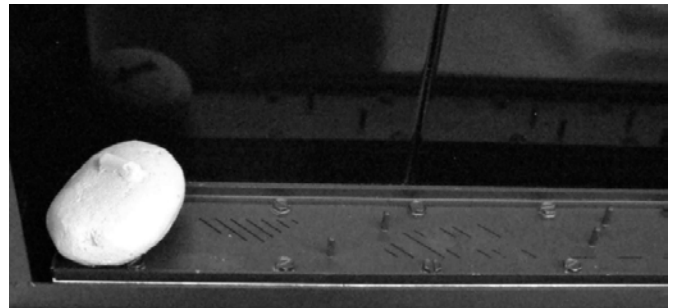


Figure 5

6. Between the rock installed during step #5 and the center birch log installed in step #2 there are 4 pins located in close proximity to each other. Place the first of the 2 individual rocks on the left set of pins. Look for a gap between the front of the rock and the leading edge of the burner, if the rock overhangs the front of the burner the incorrect rock has been used. **(Figure 6)**

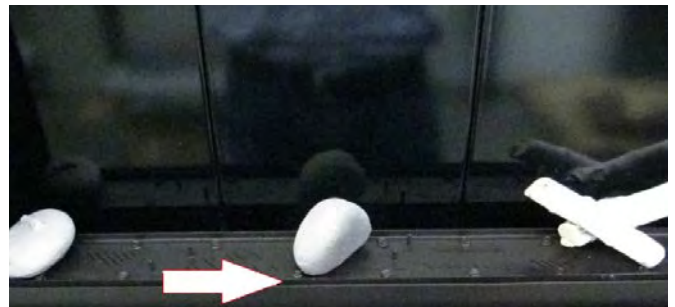


Figure 6

LOG SET INSTALLATION

7. Place the second of the 2 individual rocks on the right set of pins as shown in Figure 7. The second rock should overhang the back of the burner. The second rock will overhang the rear of the burner, nearly contacting the rear enamel panel. **(Figure 7)**



Figure 7

8. Between the rock installed during step #5 and the pair of rocks installed during steps #7, are 2 pins. The “Y” shaped log has 2 holes on its underside that correspond with these 2 pins. The right side of the log will rest on the pair of rocks as shown in **Figure 8**.

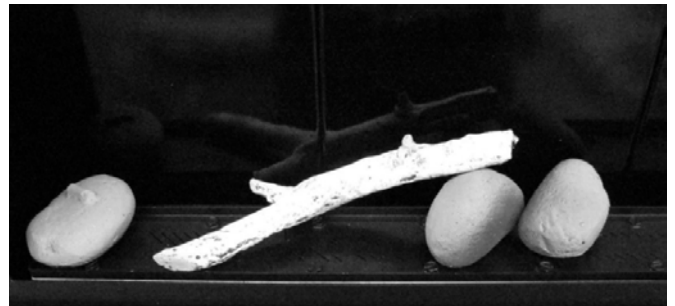


Figure 8

9. Evenly distribute the included 1lb and 3oz of lava rock on the exposed burner top. Cover the burner top completely but do not compress or “pack” the lava rock tightly. Pay special attention to tight and hard to reach areas when placing the media on the burner. It is ok if small amounts of lava rock are lost over the edge of the burner. **(Figure 9A & 9B)**



Figure 9A



Figure 9B

LOG SET INSTALLATION

10. Using the log-locating tab on the single rock on the left side of the burner, rest the small birch log on the rock and “Y” shaped log while aligning it with the leading edge of the burner as shown in **Figure 10**.



Figure 10

Installation of the Birch Log Set is now complete, refer to the FORTY8 Installation and Operation Manual for instructions on final assembly and lighting of the appliance.





We recommend that our gas hearth products be installed and serviced by professionals who are certified in the U.S. by the National Fireplace Institute® (NFI) as NFI Gas Specialists.
www.NFICertified.org

RECORD YOUR PRODUCT INFORMATION

Model #: _____ Serial Number: _____

Date Purchased: _____ Date Installed: _____

THANK YOU FOR CHOOSING
SÓLAS

solasfires.com

PROUDLY DESIGNED
& BUILT IN THE

USA