

# SÓLAS

**ONE6 Slim-Line Built-In  
DIRECT-VENT LOG SET KIT  
PART: LGS-16BI**

## INSTALLATION MANUAL

ONLY FOR USE ON SÓLAS MODEL: 16N-BICZ

### SÓLAS BIRCH LOG SET KIT



#### **WARNING**

This log set kit shall be installed by a qualified service agency in accordance with the manufacturer's instructions and all applicable codes and requirements of the Authority Having Jurisdiction. If the information in these instructions is not followed exactly, a fire, explosion or production of carbon monoxide may result causing property damage, personal injury or loss of life. The qualified service agency is responsible for the proper installation of this kit. The installation is not proper and complete until the operation of the converted appliance is checked as specified in the manufacturer's instructions supplied with the kit.

**NOT FOR USE WITH VENT-FREE OR OUTDOOR FIREPLACES**

# SÓLAS BIRCH LOG SET

### KIT CONTENTS:

- (1) CERAMIC LOGS
- (1) CERAMIC ROCKS
- 7oz. LAVA ROCK
- METAL LOG SET BURNER



↑ ↑  
BURNER SUPPORT LOCATIONS

Unless the ONE6 Direct-Vent Gas Fireplace was originally ordered with the Birch Log Set, your fireplace will have shipped from the factory with a Glass Media burner in place. Before installing the log set burner, you will need to remove the glass burner. See following steps 1-4 to remove the Glass Media burner. If the fireplace has been ordered with the Log Set Burner, you can skip to **Figure 10 – “INSTALLATION OF BIRCH LOG SET”** on Page 4 of this manual.

### REMOVAL OF GLASS MEDIA BURNER

1. The burner is held in place by 4 sheet metal screws, 2 on the left and 2 on the right. To make access to these screws easier, we are going to loosen the valve bracket so it can be moved slightly. **Figure 1** shows the screw on the left under side of the firebox securing the back of the valve bracket, remove this screw. Keep this screw in a safe place as it will be needed to secure the valve bracket again once the logset burner is installed.

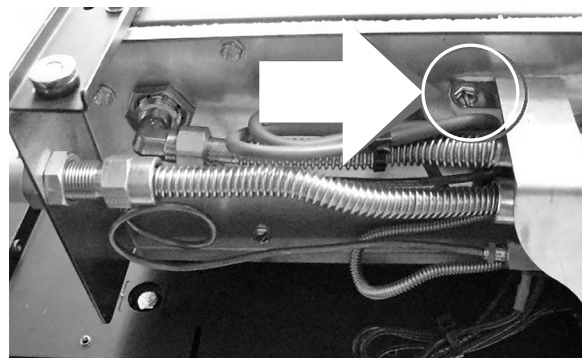
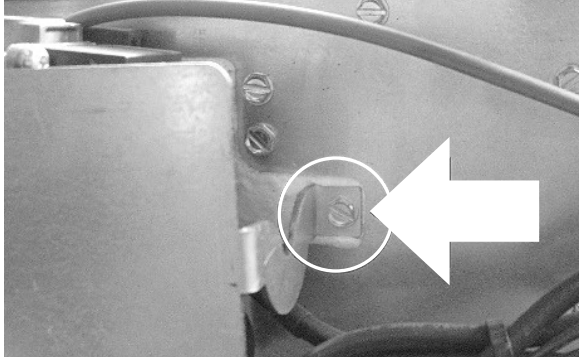


Figure 1

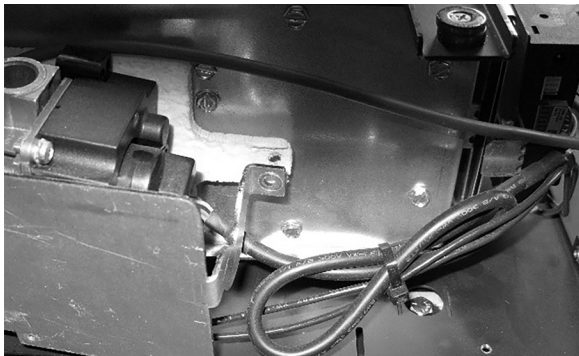
## LOG SET INSTALLATION

2. **Figure 2** shows the screw on the right underside of the firebox which secures the front of the valve bracket, remove this screw. Keep this screw in a safe place as it will be needed to secure the valve bracket again once the logset burner is installed.



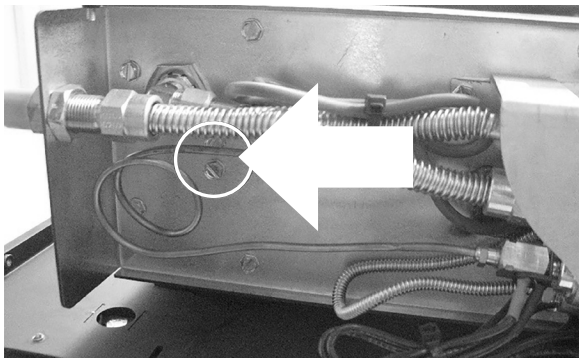
**Figure 2**

3. The valve bracket is still secured by a third screw, without removing this screw, the valve bracket and valve can be pulled down approximately  $\frac{1}{2}$ " (12mm) as shown in **Figure 3**.



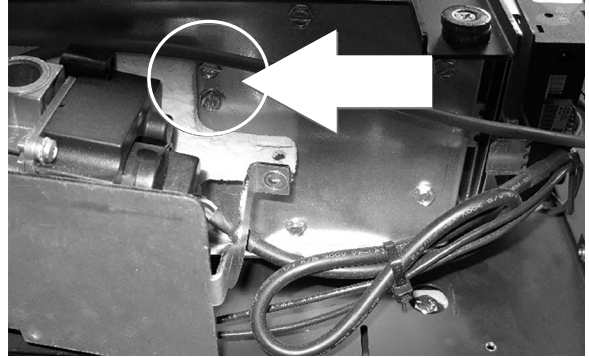
**Figure 3**

4. The burner is held in place by 4 sheet metal screws, 2 on the left and 2 on the right. **Figure 4** shows 2 screws on the left under side of the firebox, remove these screws. Keep these screws in a safe place as they will be needed to install the Log Set burner.



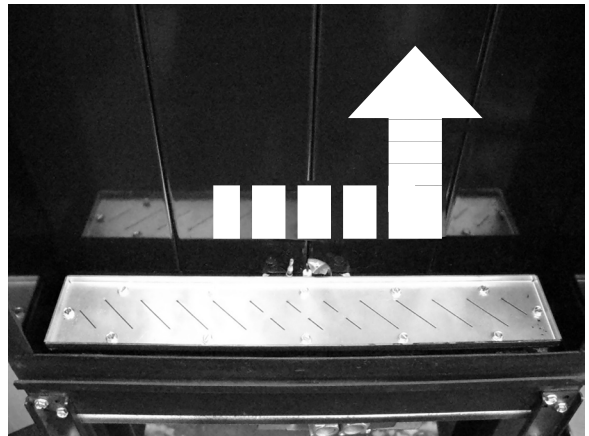
**Figure 4**

5. **Figure 5** shows the 2 screws on the right underside of the firebox, remove these screws. A  $\frac{5}{16}$ " 6" or longer nut driver will make removal of these screws easier. Keep these screws in a safe place as they will be needed to install the Logset burner.



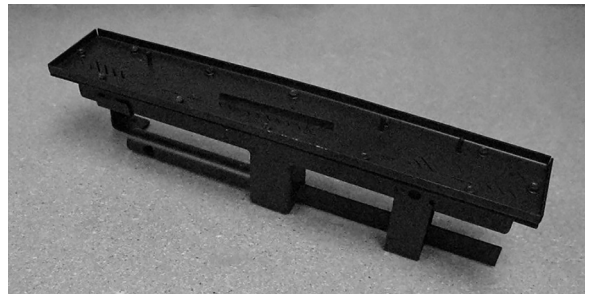
**Figure 5**

6. To remove the burner from the fireplace, slide the entire assembly to the right before lifting up to remove as shown in **Figure 6**.



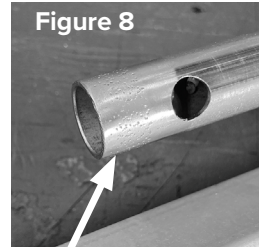
**Figure 6**

7. Once the glass media burner has been removed, locate the Logset burner included in the kit LGS-16 as shown below in **Figure 7**.

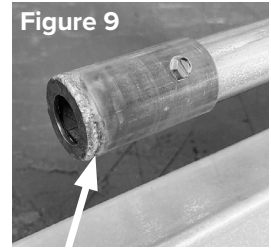


**Figure 7**

**NOTE:** The log set burner can be configured for either Natural Gas or Propane by installing or removing a collar on the burner venturi. Figure 8 shows the venturi inlet with the collar installed on a burner configured for Natural Gas. Figure 9 shows the venturi inlet with the collar removed from a burner configured for Propane. **THIS VENTURI IS NOT ADJUSTABLE.** If you need to convert your burner from Propane to Natural Gas or vice-versa, please order the appropriate conversion kit for your appliance.



Collar OFF for LP



Collar ON for NG

## INSTALLATION OF BIRCH LOG SET

> **Start HERE if the ONE6 Wall-Mount was originally ordered with a Log Set Burner**

### STEP 1

Install the logset burner within the firebox by lowering the burner into the firebox (while keeping the burner pressed toward the right side of the firebox) then sliding the burner left towards the center of the firebox to engage the burner orifice as shown in figure 10. Confirm that the burner inlet tube has engaged the burner orifice. **(Figure 10)**

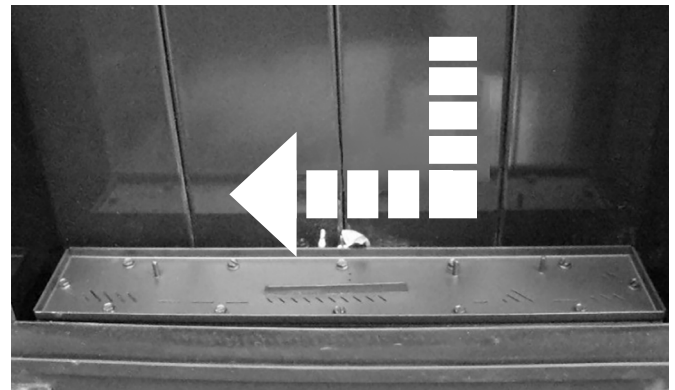


Figure 10

### STEP 2

Secure the burner using the (4) #10 sheet metal screws set aside from steps 4 & 5

### STEP 3

Secure the valve bracket using the (2) #10 sheet metal screws set aside from steps 1 & 2.

### STEP 4

Install the 3-rock cluster on the 2 pins located just right of the pilot. **(Figure 11)**



Figure 11



## LOG SET INSTALLATION

### STEP 5

Install the center birch log by placing the left side of the log on the locating pin left of the pilot. The right side of the log will rest on top of the 3-rock cluster, rotate the log so it gently touches the rear enamel panel of the firebox. **(Figure 12)**



Figure 12

### STEP 6

Evenly distribute the included 7oz of lava rock on the exposed burner top. Cover the burner top completely but do not compress or “pack” the lava rock tightly. Pay special attention to tight and hard to reach areas when placing the media on the burner. It is ok if small amounts of lava rock are lost over the edge of the burner. **(Figure 13)**



Figure 13

*Installation of the Birch Log Set is now complete, refer to the ONE6 Installation and Operation Manual for instructions on final assembly and lighting of the appliance.*



NATIONAL  
FIREPLACE  
INSTITUTE



CERTIFIED

We recommend that our  
gas hearth products be  
installed and serviced by  
professionals who are  
certified in the U.S. by the  
National Fireplace Institute®  
(NFI) as NFI Gas Specialists.  
[www.NFICertified.org](http://www.NFICertified.org)

### RECORD YOUR PRODUCT INFORMATION

Model #: \_\_\_\_\_ Serial Number: \_\_\_\_\_

Date Purchased: \_\_\_\_\_ Date Installed: \_\_\_\_\_

THANK YOU FOR CHOOSING

# SÓLAS

[solasfires.com](http://solasfires.com)

PROUDLY DESIGNED  
& BUILT IN THE

USA