

SÓLAS

ONE6
CORNER KIT
PART: CK-16-1

INSTALLATION MANUAL

ONLY FOR USE ON SÓLAS MODELS: SL-16N, SL-16P

When installing the SÓLAS-ONE6 Wall-Mount with Corner Install Kit, you will need to refer to both this manual and the Installation & Operation's Manual supplied with the fireplace.

SÓLAS ONE6 CORNER KIT

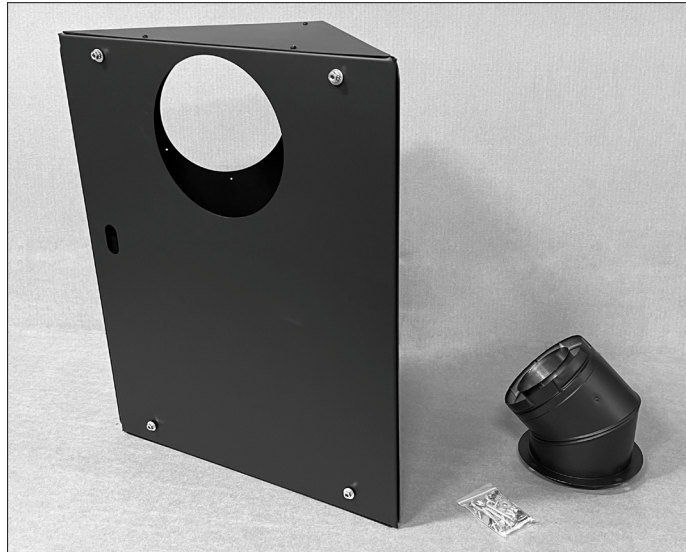


NOTE: A 12" straight section of Direct Vent Pipe will be required to complete the corner installation.

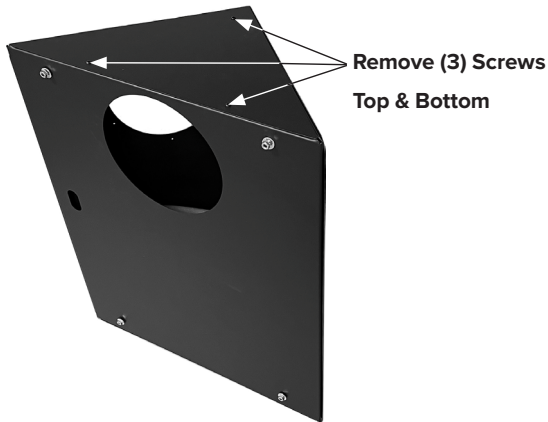
SÓLAS ONE6 CORNER KIT

KIT CONTENTS:

- (1) Assembled Corner Kit
- (1) 45° Vent Starter Pipe
- (1) Bag of Hardware



1. Remove the 3 phillips screws from the top and bottom corner pieces as shown in photo.



2. Remove the diagonal mounting plate as shown in **Figure 2**. Lift up on the diagonal mounting plate to disengage.

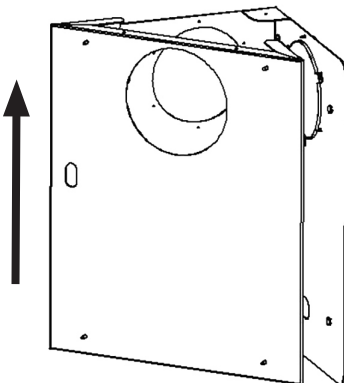


Figure 2

3. Once the location is determined for the corner installation, use the wall panel as a template and mark the location of the 9 mounting holes. Decide which wall the vent and gas inlet will penetrate and mark the locations of the vent outlet hole and gas inlet hole (**refer to page 18 of the SÓLAS ONE6 Installation & Operation's Manual**). Pre-drill the 9 lag bolt holes with a $\frac{5}{32}$ " diameter drill. Be sure that there is solid wood at each mounting location. If not, the wall will need to be reconstructed to provide the support.

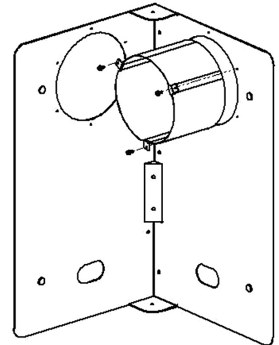


Figure 3

4. Attach the inner and outer telescoping vent pass through heat-shields to the wall plate as shown in **Figure 3 & 4**. The vent pass through heat-shields are to be installed where the vent passes through the first adjacent wall to the left or right of the corner install kit

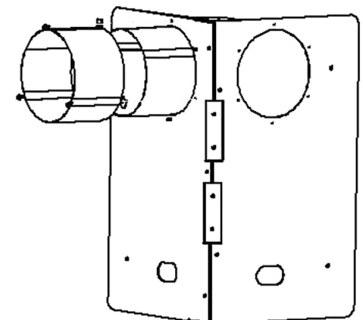


Figure 4

CORNER KIT INSTALLATION

5. Attach the wall plate to the wall with the pass through heat-shields in place, and fasten to the wall using the 9 lag bolts provided. **See Figure 5.**

Note: The four longer 2 ½" lag bolts are to be used on the diagonal mounting holes, and the five shorter lag bolts are for use on the flat mounting holes.

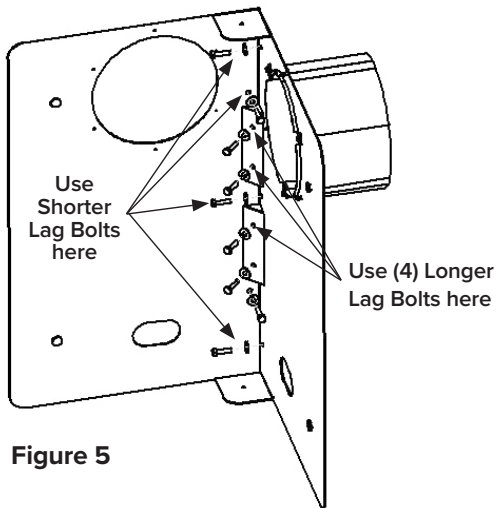


Figure 5

6. Having secured the wall plate to the wall, fit the diagonal mounting plate as shown in **Figure 6**. Please ensure that all (4) mounting pins are fully engaged in the (4) keyway slots.

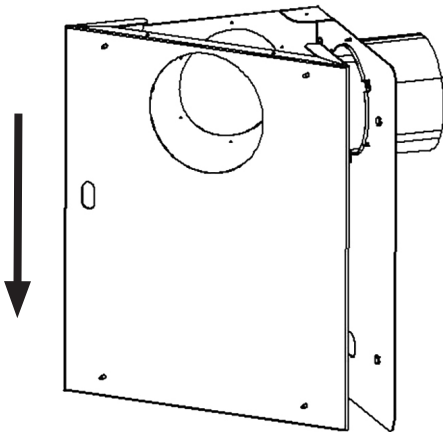


Figure 6

7. Attach the mounting plate (that came with your fireplace) to the corner wall mount unit and fasten in place with (4) lock nuts and washers. **See Figure 7.**

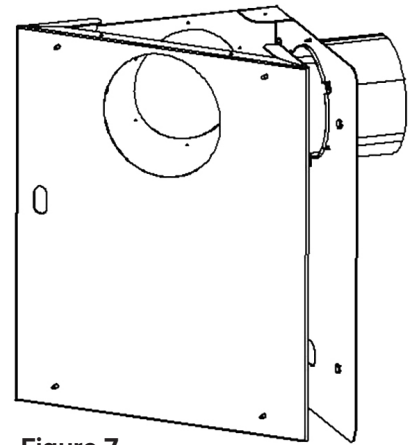


Figure 7

8. Fit the custom 45° vent starter pipe and gasket supplied with the Corner Kit to the SÓLAS ONE6 Fireplace **BEFORE** mounting the fireplace to the wall mount.

Mount the unit on the wall mount and complete the installation as described in the Installation & Operation's Manual supplied with the fireplace.

Once the installation is complete, fit the top and bottom corner cover plates to the wall mounting unit using the screws provided (that were removed in Step 1).

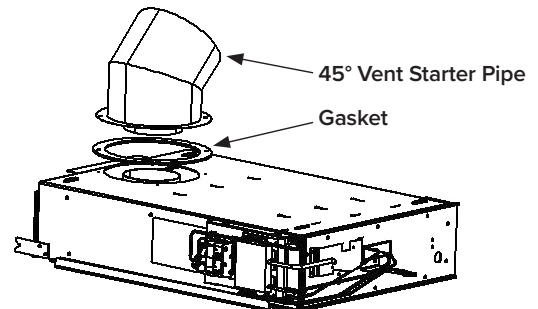


Figure 8

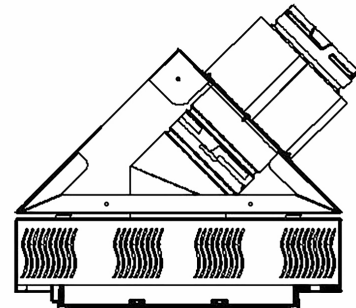


Figure 9

NATIONAL
FIREPLACE
INSTITUTE



CERTIFIED

We recommend that our
gas hearth products be
installed and serviced by
professionals who are
certified in the U.S. by the
National Fireplace Institute®
(NFI) as NFI Gas Specialists.
www.NFICertified.org

RECORD YOUR PRODUCT INFORMATION

Model #: _____ Serial Number: _____

Date Purchased: _____ Date Installed: _____

THANK YOU FOR CHOOSING

SÓLAS

solasfires.com

PROUDLY DESIGNED
& BUILT IN THE

USA