

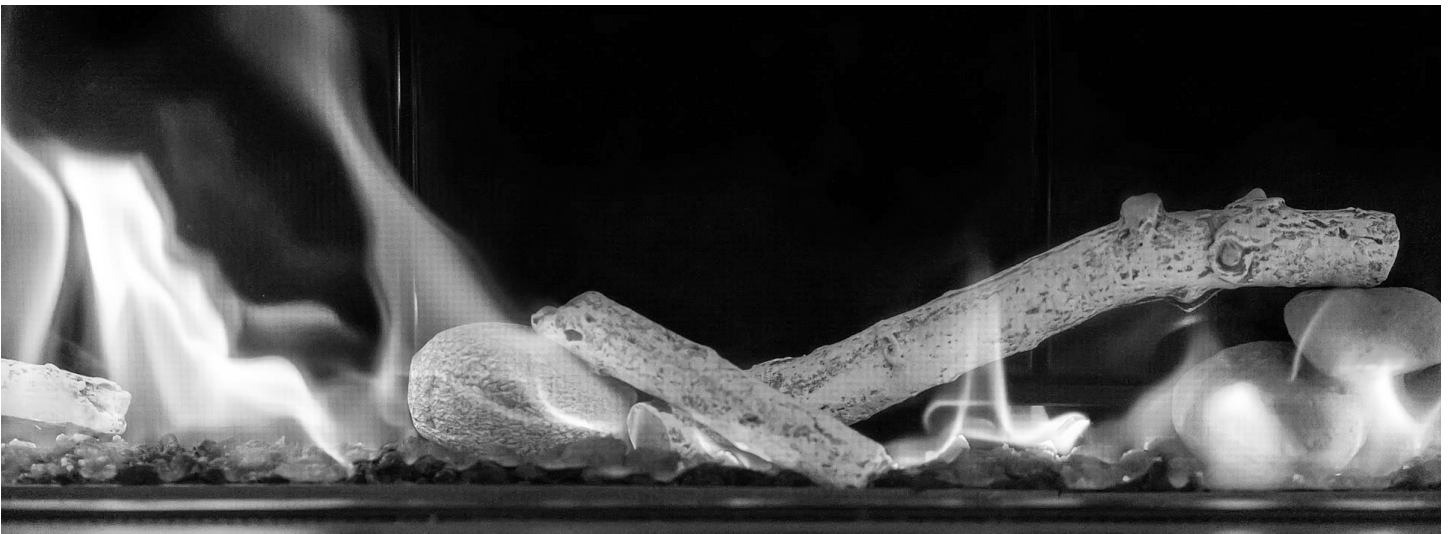
SÓLAS

SEVENTY2
DIRECT-VENT LOG SET KIT
PART: LGS-72

INSTALLATION MANUAL

ONLY FOR USE ON SÓLAS MODELS: 72N-SSL, 72P-SSR, 72N-ST, 72P-SSL, 72P-SSR, 72P-ST

SÓLAS BIRCH LOG SET KIT



WARNING

This log set kit shall be installed by a qualified service agency in accordance with the manufacturer's instructions and all applicable codes and requirements of the Authority Having Jurisdiction. If the information in these instructions is not followed exactly, a fire, explosion or production of carbon monoxide may result causing property damage, personal injury or loss of life. The qualified service agency is responsible for the proper installation of this kit. The installation is not proper and complete until the operation of the converted appliance is checked as specified in the manufacturer's instructions supplied with the kit.

NOT FOR USE WITH VENT-FREE OR OUTDOOR FIREPLACES

SÓLAS BIRCH LOG SET

KIT CONTENTS:

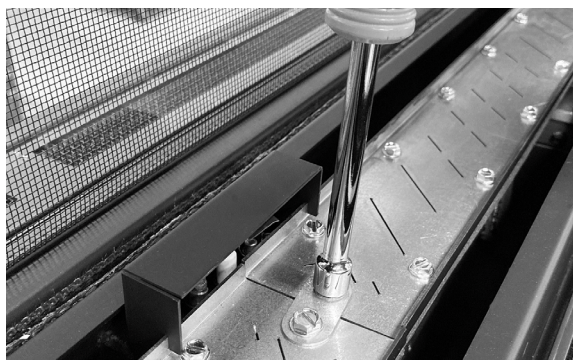
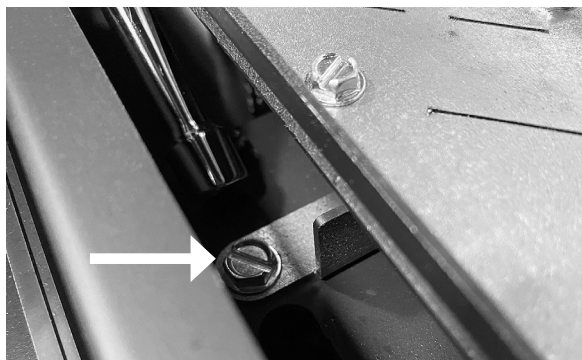
- (5) CERAMIC LOGS
- (6) CERAMIC ROCKS
- 2lb. 0oz. LAVA ROCK
- METAL LOG SET BURNERS



Unless the SEVENTY2 Slim-Line Built-In Gas Fireplace was originally ordered with the Birch Log Set, your fireplace will have shipped from the factory with Glass Media burners in place. Before installing the log set burners, you will need to remove the glass burners. See following steps 1-4 to remove the Glass Media burners. If the fireplace has been ordered with the Log Set Burner, you can skip to **Step 10 (Page 6 of this manual)**.

REMOVAL OF GLASS MEDIA BURNER

1. The burners are retained by [12] #10 sheet metal screws. Using a $\frac{5}{16}$ " nut driver, remove screws located below the burner (in front of and behind burner).
2. The SEVENTY2 has a center burner link that aligns the burners, remove the [2] #10 sheet metal screws using a $\frac{5}{16}$ " nut driver.



LOG SET INSTALLATION

3. Remove pilot hood.

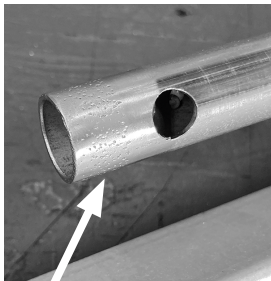


4. Lift the end of each burner up and move towards the end of the firebox until the burner inlet tube is off of the burner orifice. Lift the burner out of the fireplace.

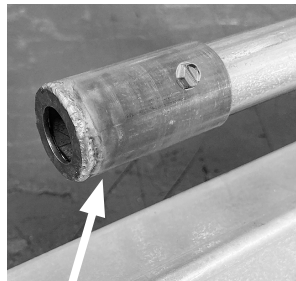


5. Once the glass media burner has been removed, locate the Log Set Burner included in the kit **LGS-72** and install in the fireplace reusing the hardware removed during disassembly.

6. When converting to propane, remove collar on burner inlet tube. When converting to natural gas install collar over burner inlet tube and secure with #8 sheet metal screw provided using a 1/4" nut driver.



Collar OFF for LP



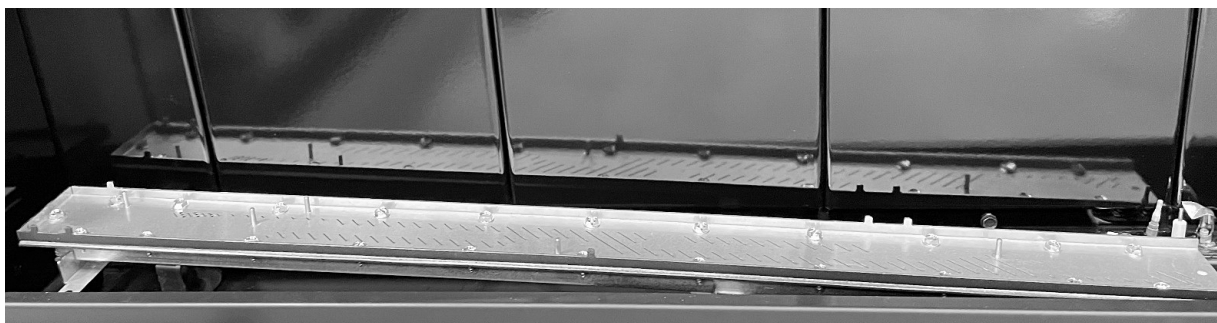
Collar ON for NG

LOG SET INSTALLATION

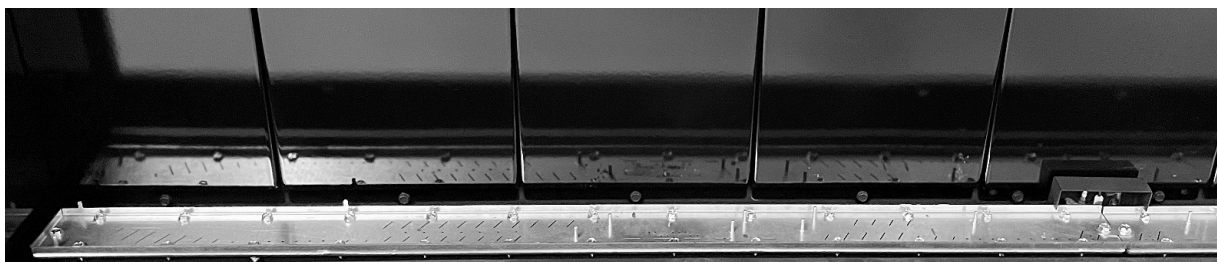
7. Install the left logset burner within the firebox by lowering the burner into the firebox. (while keeping the burner pressed toward the left side of the firebox) then sliding the burner right towards the center of the firebox to engage the burner orifice. Confirm that the burner inlet tube has engaged the burner orifice. Secure the burner using the [4] #10 sheet metal screws using a $\frac{5}{16}$ " nut driver set aside from steps 1-4.



Step 7-A



Step 7-B



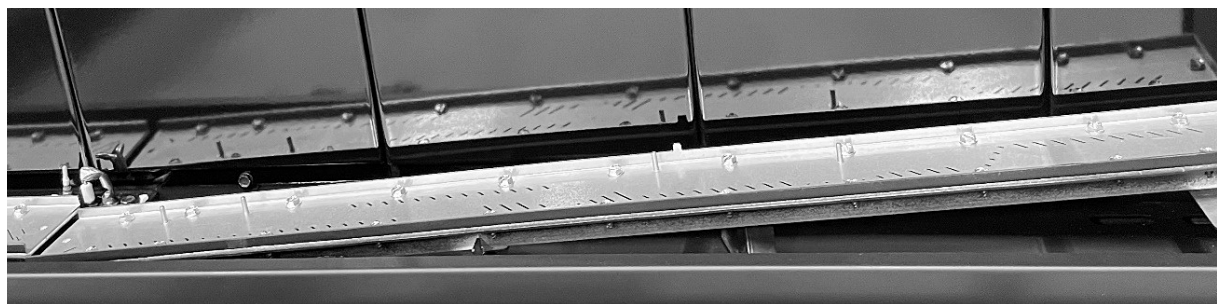
Step 7-C

LOG SET INSTALLATION

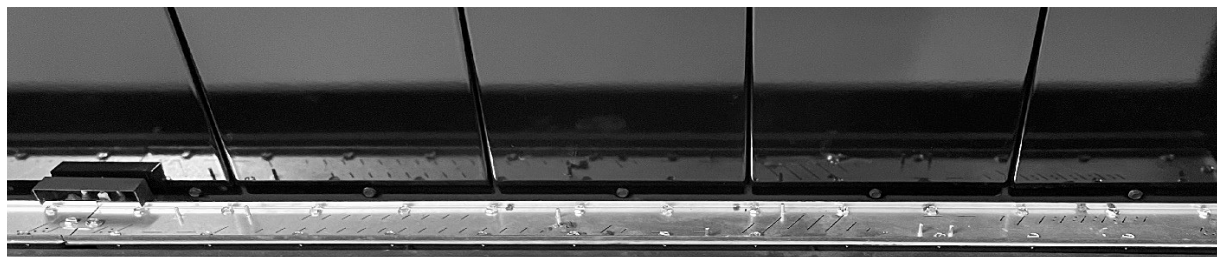
8. Install the right logset burner within the firebox by lowering the burner into the firebox. (while keeping the burner pressed toward the right side of the firebox) then sliding the burner left towards the center of the firebox to engage the burner orifice. Confirm that the burner inlet tube has engaged the burner orifice. Secure the burner using the [4] #10 sheet metal screws using a $\frac{5}{16}$ " nut driver set aside from steps 1-4.



Step 8-A



Step 8-B



Step 8-C

LOG SET INSTALLATION

9. Secure the central burner link using the [2] #10 sheet metal screws using a $\frac{5}{16}$ " nut driver set aside from **Step 2**. Figure 9-A shows the burners before the burner link is installed; Figure 9-B shows the burners after the burner link has been installed.



Figure 9-A



Figure 9-B

INSTALLATION OF BIRCH LOG SET

> **Start *HERE* if the *SEVENTY2 Slim-Line Built-In* was originally ordered with a Log Set Burner**

10. Install the 3-rock cluster on the 2 pins located at the far left of the firebox as shown in Figure 10.
11. Install these two rocks shown in figure 11 on the pins slightly to the right of the 3-rock cluster installed in step 10.



Figure 10



Figure 11

LOG SET INSTALLATION

12. Install the 3-rock cluster as shown in Figure 12 on the pins to the right of the pilot assembly, towards the back of the burner.
13. Install the 3-rock cluster shown in Figure 13 to the right of the cluster installed in step 12.



Figure 12



Figure 13

14. Install the middle birch log set by placing the right side of the log on the 3-rock cluster you installed in step #12. The left side of the log engages with the pin located to the left of the pilot assembly.



Figure 14

LOG SET INSTALLATION

15. Install the log shown in Figure 15 with the left side resting on the 3-rock cluster you installed in step 10. The right side of the log rests on the burner as shown located by a pin.



Figure 15

16. Install the log shown in Figure 16 with the right side resting on the 2 rocks installed in step 11. The left side of the log rests on the burner as shown located by 2 pins.



Figure 16

17. Install the log shown in Figure 17 with the left side resting on the 3-rock cluster installed in step 13. The rock is located by a single pin and aligned parallel to the front edge of the burner. The log rests on the rock as shown, the right side is located by 2 pins on the burner.



Figure 17

LOG SET INSTALLATION

18. Install the single rock and log shown in Figure 18, the rock is located by a single pin and aligned parallel to the front edge of the burner with the left side of the log resting on top. The right side of the log rests on the burner, a groove in the underside of the log interfaces with the front edge of the burner, slide the log to the right until the tip of the log is about to make contact with the enamel side panel.



Figure 18

19. Evenly distribute the included 2lb and 0oz of lava rock on the exposed burner top. Cover the burner top completely but do not compress or “pack” the lava rock tightly. Pay special attention to tight and hard to reach areas when placing the media on the burner. It is ok if small amounts of lava rock are lost over the edge of the burner.



Installation of the Birch Log Set is now complete, refer to the SEVENTY2 Installation and Operation Manual for instructions on final assembly and lighting of the appliance.

NATIONAL
FIREPLACE
INSTITUTE



CERTIFIED

We recommend that our
gas hearth products be
installed and serviced by
professionals who are
certified in the U.S. by the
National Fireplace Institute®
(NFI) as NFI Gas Specialists.
www.NFICertified.org

RECORD YOUR PRODUCT INFORMATION

Model #: _____ Serial Number: _____

Date Purchased: _____ Date Installed: _____

THANK YOU FOR CHOOSING

SÓLAS

solasfires.com

PROUDLY DESIGNED
& BUILT IN THE

USA