

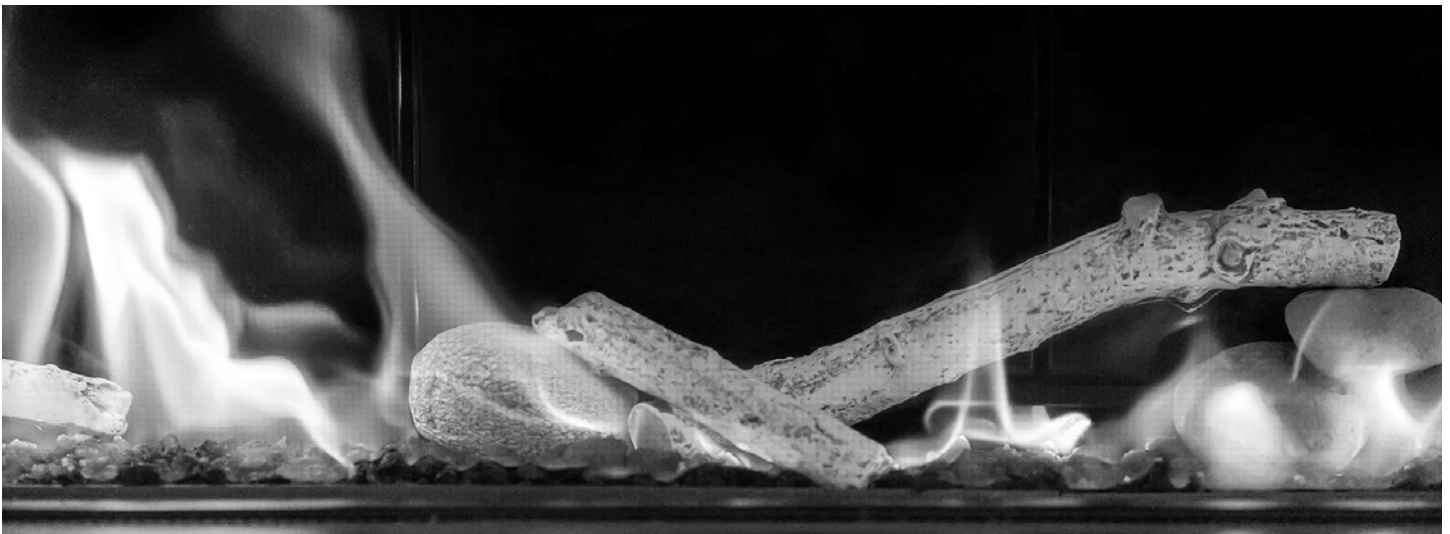
SÓLAS

SIXTY0
DIRECT-VENT LOG SET KIT
PART: LGS-60

INSTALLATION MANUAL

ONLY FOR USE ON SÓLAS MODELS: 60N-SSL, 60P-SSR, 60N-ST, 60P-SSL, 60P-SSR, 60P-ST

SÓLAS BIRCH LOG SET KIT



WARNING

This log set kit shall be installed by a qualified service agency in accordance with the manufacturer's instructions and all applicable codes and requirements of the Authority Having Jurisdiction. If the information in these instructions is not followed exactly, a fire, explosion or production of carbon monoxide may result causing property damage, personal injury or loss of life. The qualified service agency is responsible for the proper installation of this kit. The installation is not proper and complete until the operation of the converted appliance is checked as specified in the manufacturer's instructions supplied with the kit.

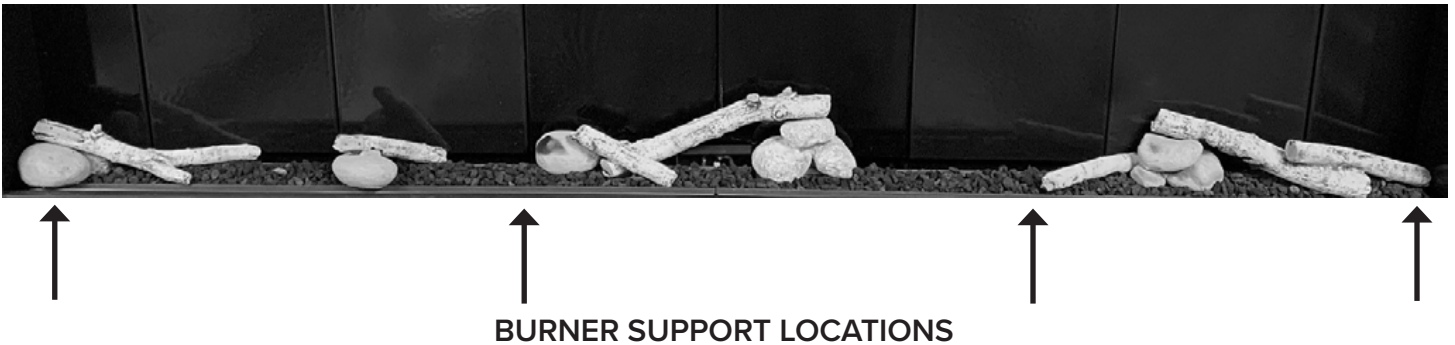
NOT FOR USE WITH VENT-FREE OR OUTDOOR FIREPLACES

INSTALLER: Leave this manual with appliance | **CONSUMER:** Retain this manual for future reference

SÓLAS BIRCH LOG SET

KIT CONTENTS:

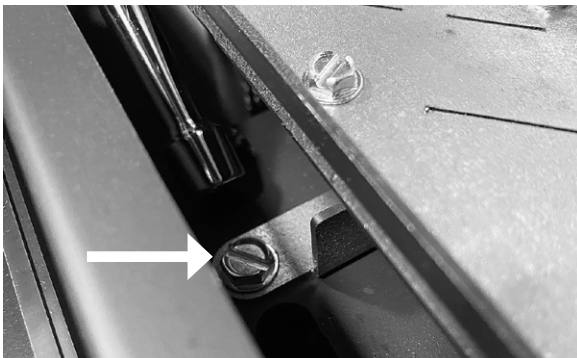
- (5) CERAMIC LOGS
- (6) CERAMIC ROCKS
- 1lb. 11oz. LAVA ROCK
- METAL LOG SET BURNERS



Unless the SIXTY0 Slim-Line Built-In Gas Fireplace was originally ordered with the Birch Log Set, your fireplace will have shipped from the factory with Glass Media burners in place. Before installing the log set burners, you will need to remove the glass burners. See following steps 1-4 to remove the Glass Media burners. If the fireplace has been ordered with the Log Set Burner, you can skip to **Step 10 (Page 6 of this manual)**.

REMOVAL OF GLASS MEDIA BURNER

1. The burners are retained by [8] #10 sheet metal screws. Using a $\frac{5}{16}$ " nut driver, remove screws located below the burner (in front of and behind burner).
2. The SIXTY0 has a center burner link that aligns the burners, remove the [2] #10 sheet metal screws using a $\frac{5}{16}$ " nut driver.



LOG SET INSTALLATION

3. Remove pilot hood.

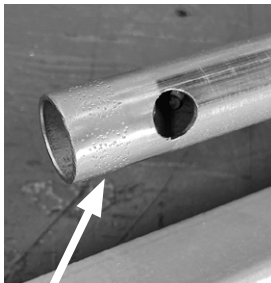


4. Lift the end of each burner up and move towards the end of the firebox until the burner inlet tube is off of the burner orifice. Lift the burner out of the fireplace.

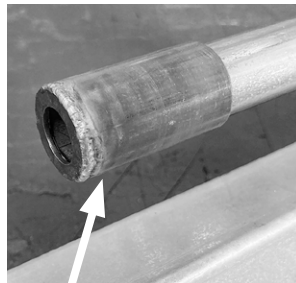


5. Once the glass media burner has been removed, locate the Log Set Burner included in the kit **LGS-60** and install in the fireplace reusing the hardware removed during disassembly.

6. When converting to propane, remove collar on burner inlet tube. When converting to natural gas install collar over burner inlet tube and secure with #8 sheet metal screw provided using a 1/4" nut driver.



Collar OFF for LP



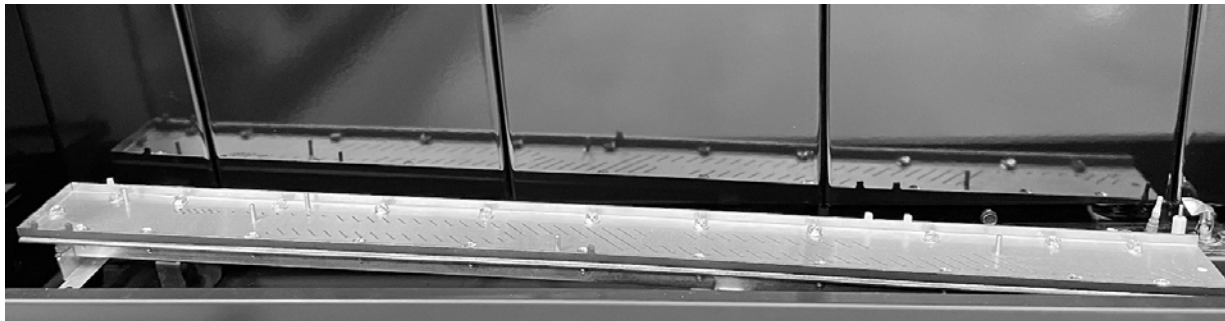
Collar ON for NG

LOG SET INSTALLATION

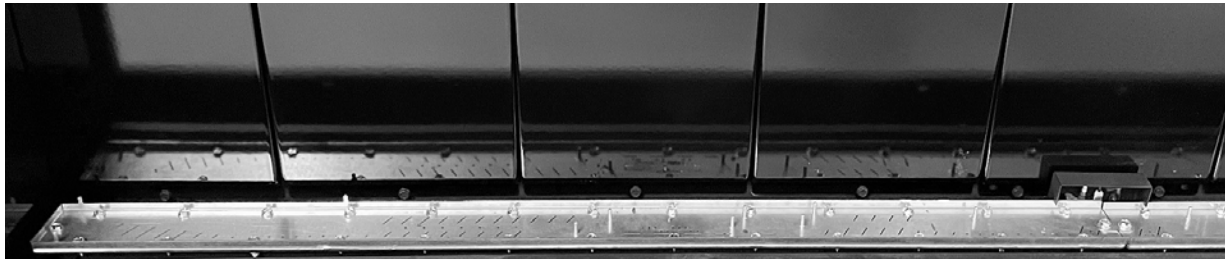
7. Install the left logset burner within the firebox by lowering the burner into the firebox. (while keeping the burner pressed toward the left side of the firebox) then sliding the burner right towards the center of the firebox to engage the burner orifice. Confirm that the burner inlet tube has engaged the burner orifice. Secure the burner using the [4] #10 sheet metal screws using a $\frac{5}{16}$ " nut driver set aside from steps 1-4.



Step 7-A



Step 7-B



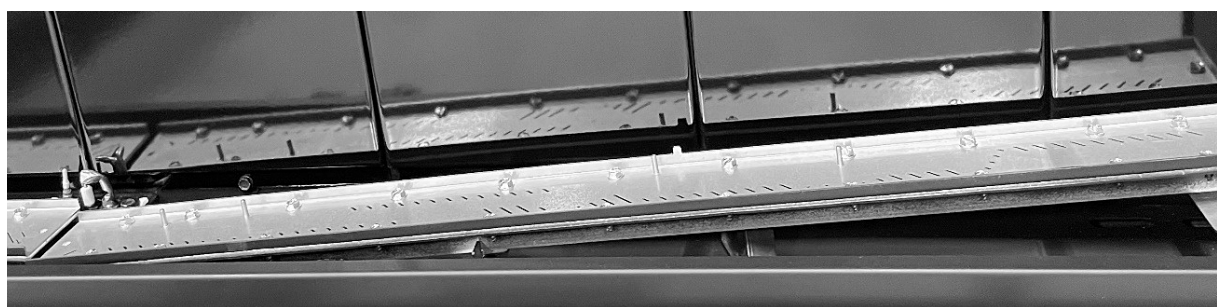
Step 7-C

LOG SET INSTALLATION

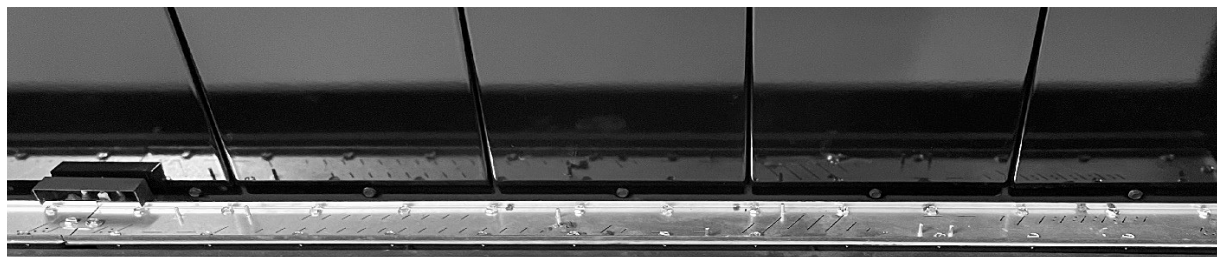
8. Install the right logset burner within the firebox by lowering the burner into the firebox. (while keeping the burner pressed toward the right side of the firebox) then sliding the burner left towards the center of the firebox to engage the burner orifice. Confirm that the burner inlet tube has engaged the burner orifice. Secure the burner using the [4] #10 sheet metal screws using a $\frac{5}{16}$ " nut driver set aside from steps 1-4.



Step 8-A



Step 8-B



Step 8-C

LOG SET INSTALLATION

9. Secure the central burner link using the [2] #10 sheet metal screws using a $\frac{5}{16}$ " nut driver set aside from **Step 2**. Figure 9-A shows the burners before the burner link is installed; Figure 9-B shows the burners after the burner link has been installed.



Figure 9-A



Figure 9-B

INSTALLATION OF BIRCH LOG SET

> **Start HERE if the SIXTY0 Slim-Line Built-In was originally ordered with a Log Set Burner**

10. Install the 3-rock cluster on the 2 pins located to the right of the pilot assembly as shown below in Figure 10.
11. Install the log, resting along the back edge the 3-rock cluster, the left side of the log locates on a single pin in the burner surface as shown in Figure 11 (below right).



Figure 10



Figure 11

LOG SET INSTALLATION

12. Install the single rock as shown below in Figure 12 on the 2 pins projecting up from the rear edge of the burner top, left of the center log installed in Step 11.
13. Install the pair of single rocks as shown in Figure 13 on the 2 sets of pins projecting up from the left side of the left burner as shown in below right image (Figure 13).



Figure 12



Figure 13

14. Install the Y-shaped log shown below (Figure 14). The right side of the log locates on 2 pins projecting up from the burner surface, the left side of the log rests in the joint between the 2 rocks installed in Step 13.



Figure 14

LOG SET INSTALLATION

15. At the midpoint of the left burner, centered between the rock and log features installed during steps 10-14, are 2 pins to locate the rock shown in Figure 15-A. Note the orientation of the tab on the top surface of the rock (identified by the arrow in Figure 15-A).

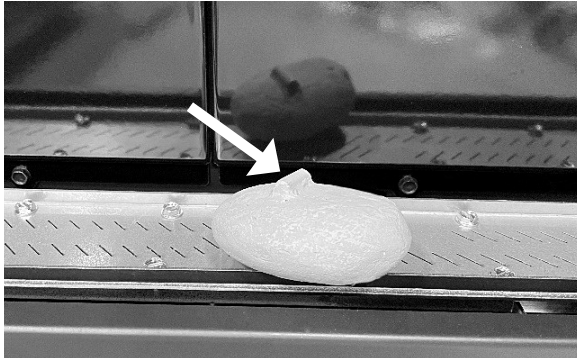


Figure 15-A



Figure 15-B

16. To the right of the center rock and log installed in Step 9-10 is a 3-rock cluster located by a single pin, once the rock engages the pin, rotate the rock cluster clockwise until the left corner of the rock cluster engages the rear edge of the burner as shown below in Figure 16.



Figure 16

17. The 3-rock cluster installed in Step 16 supports the left side of the large log shown below in Figure 17. The right side of the log rests on the burner, a groove in the underside of the log interfaces with the front edge of the burner, slide the log to the right until the tip of the log is about to contact the enamel side panel.



Figure 17

LOG SET INSTALLATION

18. Immediately left of the 3-rock cluster installed in Step 16 are 2 pins used to locate the small log as shown below in Figure 18.



Figure 18

19. Evenly distribute the included 1lb and 11oz of lava rock on the exposed burner top. Cover the burner top completely but do not compress or “pack” the lava rock tightly. Pay special attention to tight and hard to reach areas when placing the media on the burner. It is ok if small amounts of lava rock are lost over the edge of the burner.



Installation of the Birch Log Set is now complete, refer to the SIXTY0 Installation and Operation Manual for instructions on final assembly and lighting of the appliance.



We recommend that our gas hearth products be installed and serviced by professionals who are certified in the U.S. by the National Fireplace Institute® (NFI) as NFI Gas Specialists.
www.NFICertified.org

RECORD YOUR PRODUCT INFORMATION

Model #: _____ Serial Number: _____

Date Purchased: _____ Date Installed: _____

THANK YOU FOR CHOOSING
SÓLAS

solasfires.com

PROUDLY DESIGNED
& BUILT IN THE

USA